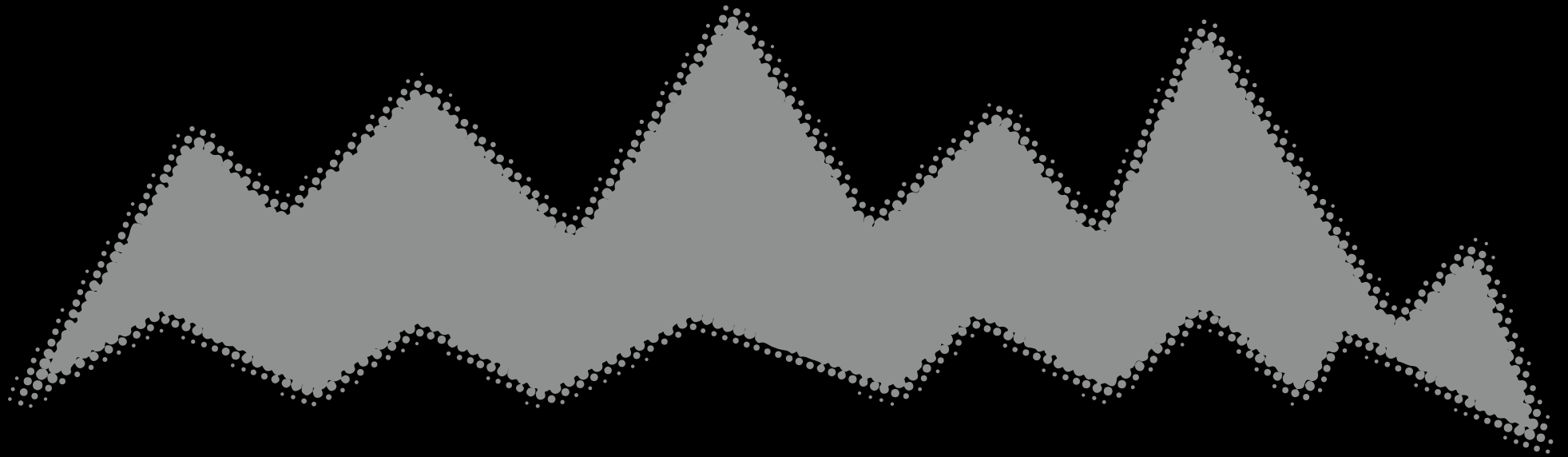


×
neverdark
smart fire



CATALOGUE 2024

THE STORY

PRODUCT

Smart fireplace
SFT technology
Safe Eco Easy
Comparison
Certificates

COMPANY

Our history
Our values
Our vision
Our performance
Made in Ukraine

Summary

THE CATALOGUE

FREE-STANDING SMART FIREPLACES

Fild
The Log
Mosswood
Around Coffee
Around Single
Around Patio

BUILT-IN SMART FIREPLACES

Automatic
Firetec
Chalet-I (In)
Chalet-I (Ex)
Chalet-II (In)
Chalet-II (Ex)
Around

THERMOBOXES

Standard Installation
Hidden Installation

neverdark

We produce smart fireplaces
with real fire for apartments

THE STORY

PRODUCT • COMPANY

Smart fireplace is

The smart fireplace is an innovative device built on SFT technology that creates a real flame without a chimney, can be controlled via an app, and easily integrates into the Smart Home System.

This is an exclusive Neverdark development: with the help of a special thermal box, you can quickly and easily install a smart fireplace in your apartment and enjoy the warmth of a live fire, just like in a traditional wood-burning fireplace.

All processes in a smart fireplace occur automatically and are fully controlled by electronics using sensors. You only need to plug it in.

The fireplace does not heat up inside; there is no pressure, and the fuel in the tank does not come into contact with the fire, remaining cold. Refueling is also automatic. The flame in our smart fireplace is open and always remains controlled and safe.

The smart fireplace is the most convenient and eco-friendly fireplace with a real flame on the market.

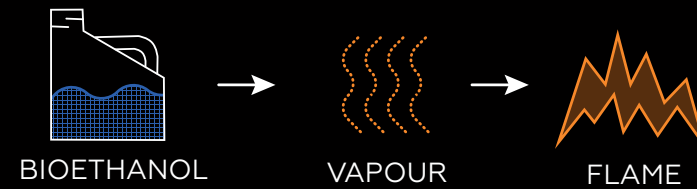
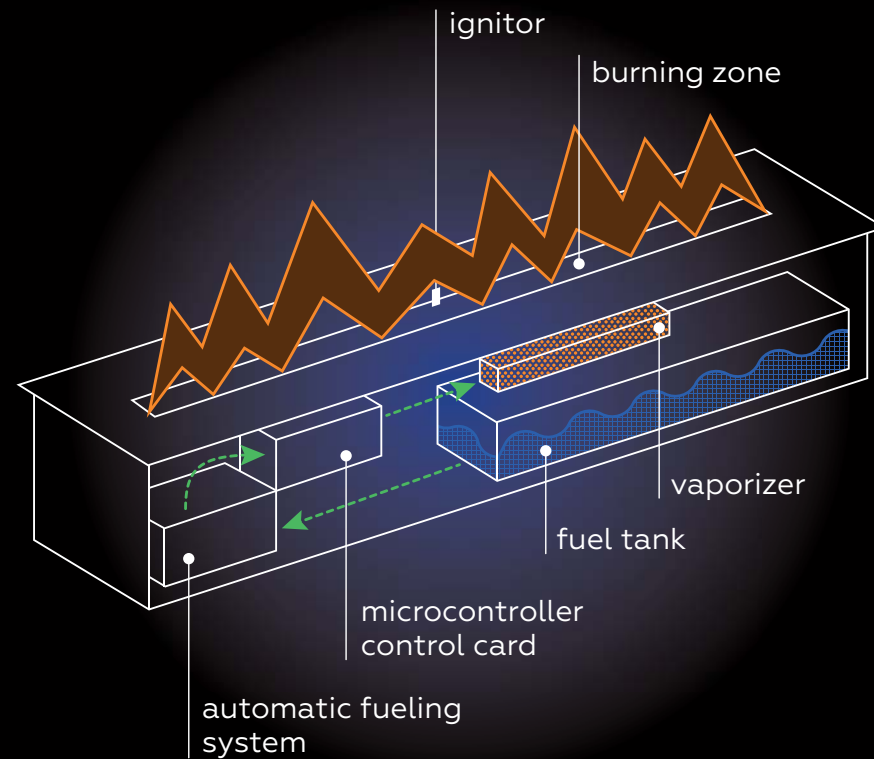


Smart Fireplace Technology

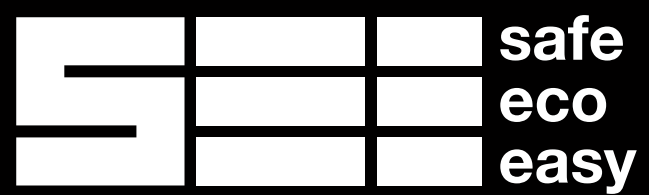
SFT (Smart Fireplace Technology) is a unique know-how that converts plant fuel into a real smoke-free fire.

SFT technology is based on an automatic supply of bioethanol to a special burner, where it is transformed into vapor, ignited by a glow plug, and produces a true live flame.

Bioethanol vapors released during combustion produce only CO₂ and water vapor, and the entire process, from fuel production to combustion, has a closed CO₂ cycle and is fully eco-friendly.



THE STORY • PRODUCT • SAFE ECO EASY



We see our product through the SEE values filter



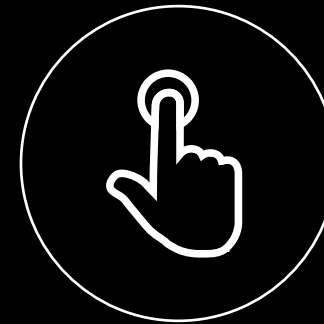
SAFE

is for the most secure way of enjoying fire inside your apartment — zero emission, flame control, one-click on/off



ECO







is for the nature-friendly approach — our plant based fuel is renewable and harmless for the environment



EASY

is for the smart simplicity in every detail — smartphone integration, simple installation, no cleaning needed

Smart fireplace is the most simple, safe and ecologically friendly of all fireplaces with a real fire in the world

PARAMETERS		SMART FIREPLACES	WOODEN	GAS	MANUAL ETHANOL
	No smoke, smell, emissions	Yes	Emits smoke	Harmful emissions	Smell emissions
	No special cleaning	Yes	Lots of ash	Yes	Yes
	Protection systems	Safety sensors	No	Available	No
	No additional communications	Yes	Needed	Needed	Yes
	For any apartments	Yes	No	No	Yes
	Smart control system	APP, Smart Home	No	Available	No

All our products are certified

CE EAC RoHS



Our history

Neverdark is a Ukrainian production company founded in 2019 by two friends who dedicated their entire lives to innovations and...kitesurfing.

One day, during one of our kite trips, when we were sitting with friends by the fire, we had an idea that later became a business. We decided to take a piece of the wild element of fire to our homes and create a fireplace with a real fire but without bad smell and smoke.

Due to many years of experience in technology and innovation, we have created a smart fireplace in which we have invested all our love for nature and travel.

This device has completely changed people's perception of what an ordinary city apartment can be like — when the magic of an open fire appears there.

From then on, we are working on new ideas every day, researching trends in production and design, to create the best products in the world.

We have fire in our hearts, and that makes the real difference.



neverdark



neverdark

pure
fire



neverdark

neverdark

neverdark

neverdark

БОГОНЬ!

neverdark



Our values

FRIENDSHIP

We are friendly in every single way, from our ecologic attitude to nature to the relationships we build with our colleagues and partners.

PASSION

We are on fire! We are extremely passionate about what we do, which clearly inspires our team to produce exceptional ideas and to do an excellent job.

INNOVATION

We are constantly reviewing and improving ourselves to provide a better product and service experience. We are always in search of cutting-edge technology, and we are ready to invent one if it doesn't exist yet.

Our vision

1

We believe a real fire is part of our natural sense of home

2

We know that a fireplace can be as simple, convenient, and safe as any other house appliance

3

We see smart fireplaces as an integral part of the smart home ecosystem

Our performance

12+

years of innovation in creating
smart fireplaces

500+

successful projects across the
globe

6

international
quality certificates

10+

countries with our
sales offices

MADE IN UKRAINE  **NO MATTER WHAT**

We are made in Ukraine and we are proud of it.

With dignity, strength and courage, we continue to work in Ukraine in the conditions of war.

Regardless of the conditions of war.
Defeating the conditions of war.
We bring light.

No matter what, we grow, provide jobs, pay taxes, develop in our field, strengthen professional ties with Europe and donate to the Armed Forces of Ukraine.

We believe that fire will defeat the evil darkness.

NO MATTER WHAT.



Neverdark is a smart innovative bioethanol fireplace for your cozy and modern apartment

We are the concept of fire reinvented.
We bring light, warmth and comfort to
your apartment in the safest, most
eco-friendly way possible, thanks to
the most recent industry innovations.

Our fireplaces are invented and
produced in Ukraine using
cutting-edge technologies and
designs.

- **The safest fireplace of all**
- **Smart control**
- **No smoke**
- **No smell**
- **No utility systems are required**
- **3 years' warranty**

THE CATALOGUE

FREE-STANDING
FIREPLACES

•

BUILT-IN
FIREPLACES

•

THERMOBOXES

FREE-STANDING FIREPLACES

FILD

free-standing linear

FEATURES



3 levels of flame



Remote control
(on\off, flame level adjustment)



Integrated push-to-open
control and refueling panel



LCD text-display



Reflective black glass on the back



Integrated glass border



Great for standing on the floor
under the TV



TECHNICAL DATA

L x W x H, mm	1000 x 370 x 745
Burning time, h (min max)	2,1 4,5
Room size, m ² (min* recommended)	35 88

* Using a ventilation system

OPTIONS



Additional
Remote Control



On the photo:
Smart Fireplace Fild on the floor
in the attic.

The sloped back wall also allows
this fireplace to be installed under
the TV.

THE LOG

free-standing volumetric

FEATURES



Innovative burner with volumetric fire



Mobile App (Wi-Fi, monitoring and control with smooth flame level adjustment)



Built-in automatic refueling (no fuel spill)



Touch-display (full control)



Integrated push-to-open control and refueling panel



Heat-insulated housing



Decorated with lava stones, ceramic logs and glowing fiber



Finish options: brass or black gloss



TECHNICAL DATA

L x W x H, mm	1080 x 315 x 840
Burning time, h (min max)	3,2 7,0
Room size, m ² (min* recommended)	30 75

* Using a ventilation system

OPTIONS



Additional
Remote Control



On the photo:
Smart Fireplace Log in the
bathroom.

The brass backs create a magical
warm glow from the fire.

MOSSWOOD

free-standing volumetric

FEATURES



Innovative burner with volumetric fire



Mobile App (Wi-Fi, monitoring and control with smooth flame level adjustment)



Built-in automatic refueling (no fuel spill)



Touch-display (full control)



Integrated push-to-open control and refueling panel



Modular design (vertical up / vertical down / horizontal left / horizontal right)



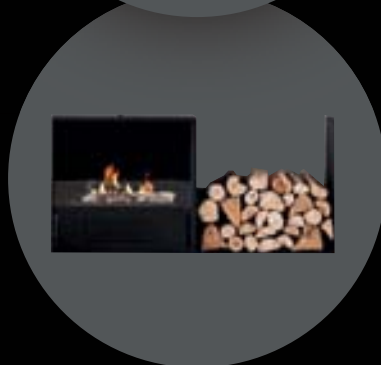
Heat-insulated housing



Woodbox with natural logs



Decorated with lava stones, ceramic logs and glowing fiber



TECHNICAL DATA

Fireplace L x W x H, mm	670 x 350 x 645
Woodbox L x W x H, mm	670 x 350 x 645
Burning time, h (min max)	3,0 7,5
Room size, m ² (min* recommended)	27 68

* Using a ventilation system

OPTIONS



Additional
Remote Control



Additional Woodbox



On the photo:
Smart Fireplace Mosswood in the
kitchen.

Vertical arrangement with
fireplace on the top of woodbox.



On the photo:
Smart Fireplace Mosswood in the living room.

Vertical arrangement with woodbox on the top of fireplace.



On the photo:
Smart Fireplace Mosswood in the
living room.

Horizontal arrangement with one
woodbox near the fireplace.

AROUND COFFEE

free-standing round

FEATURES



You can choose the character of the fireplace flame



Innovative burner with volumetric fire



Mobile App (Wi-Fi, monitoring and control with smooth flame level adjustment)



No control panel (minimalistic LED indicator)



Remote control (on/off, flame level adjustment)



Does not require refueling (just replace the fuel canister)



Acrylic stone table



Decorated with lava stones, ceramic logs and glowing fiber



TECHNICAL DATA

D x H, mm	900 x 860
Burning time, h (min max)	3,8 8,3
Room size, m ² (min* recommended)	35 88

* Using a ventilation system

OPTIONS



Custom Stand Color



Custom Table Design



Additional
Remote Control



Decorative Chimney Pipe



On the photo:
Smart Fireplace Around Coffee in
the homeowner's study room in
the country house.

AROUND SINGLE

free-standing round

FEATURES



You can choose the character of the fireplace flame



Innovative burner with volumetric fire



Mobile App (Wi-Fi, monitoring and control with smooth flame level adjustment)



No control panel (minimalistic LED indicator)



Remote control (on\off, flame level adjustment)



Does not require refueling (just replace the fuel canister)



Decorated with lava stones, ceramic logs and glowing fiber



TECHNICAL DATA

D x H, mm	500 x 830
Burning time, h (min max)	3,8 8,3
Room size, m ² (min* recommended)	35 88

* Using a ventilation system

OPTIONS



Custom Stand Color



Additional
Remote Control



Decorative Chimney Pipe



On the photo:
Smart Fireplace Around Single in
the bedroom.

AROUND PATIO

free-standing round

FEATURES



You can choose the character of the fireplace flame



Innovative burner with volumetric fire



Mobile App (Wi-Fi, monitoring and control with smooth flame level adjustment)



No control panel (minimalistic LED indicator)



Remote control (on\off, flame level adjustment)



Does not require refueling (just replace the fuel canister)



Decorated with lava stones, ceramic logs and glowing fiber



TECHNICAL DATA

D x H, mm	500 x 1330
Burning time, h (min max)	3,8 8,3
Room size, m ² (min* recommended)	35 88

* Using a ventilation system

OPTIONS



Custom Stand Color



Additional
Remote Control



Decorative Chimney Pipe



On the photo:
Smart fireplaces Around Patio
between tables in a restaurant.

BUILT-IN FIREPLACES

AUTOMATIC

built-in linear

FEATURES



3 levels of flame



Remote control
(on/off, flame level adjustment)



Integrated push-to-open
control and refueling panel



LCD text-display



Black matte top panel



TECHNICAL DATA

Length, mm	700	1000	1200	1500	2000
Burning time, h (min max)	1,5 4,1	2,1 4,5	2,3 5,3	2,3 5,6	2,1 4,6
Room size, m ² (min* recommended)	27 68	35 88	41 102	54 136	73 184

* Using a ventilation system

OPTIONS



Glass Border (one or two)



Additional Remote Control



Inox top panel

EMBEDDINGS





On the photo:
Smart fireplace Automatic in the apartment is built into the podium in the living room.



On the photo:
Smart fireplace Automatic with
glass borders is built into

a movable cabinet in the
home library.

FIRETEC

built-in linear

FEATURES



Extended flame line (+10cm)



Mobile App (Wi-Fi, monitoring and control with smooth flame level adjustment)



Built-in automatic refueling (no fuel spill)



Enlarged fuel tank (up to 9 hrs of burning)



Touch-display (full control)



No-touch system (open the control panel with a wave of the hand)



Black glossy top panel (gives reflection of the flame)

or



Black matte top panel



TECHNICAL DATA

Length, mm	700	800	1000	1200	1500	2000	2500
Burning time, h (min max)	3,8 8,6	3,7 9,3	3,4 7,8	3,7 8,3	3,3 7,2	3,9 8,2	2,8 6,6
Room size, m ² (min* recommended)	22 54	27 68	38 95	41 102	54 136	68 170	122 306

* Using a ventilation system

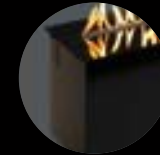
OPTIONS



Glass Border (one or two)



Remote Control



Enlarged Fuel Tank



External control and refueling module: ARS standard / ARS mini (up) / ARS mini (down)



Smart Home module



Top panel options: black matte, INOX, RAL matte, RAL glossy

EMBEDDINGS





On the photo:
Smart fireplace Firetec with a
Three-Sided Thermobox built into
the furniture.

Option: Black Reflective Screen
used for additional flame
reflection.



On the photo:
Smart fireplace Firetec in the
living room of a private house. The
fireplace is built into a hinged

MDF cabinet.
Customization: A thermal
insulation panel is installed
over the fireplace to

protect the furniture from
the extra heat.
The TV is recessed into a
niche in the furniture.

CHALET-I (IN)

built-in volumetric

FEATURES



Innovative burner with volumetric fire



Touch-display (full control)



Black matte finish



Mobile App (Wi-Fi, monitoring and control with smooth flame level adjustment)



Integrated push-to-open control and refueling panel



Built-in automatic refueling (no fuel spill)



Decorated with lava stones, ceramic logs and glowing fiber

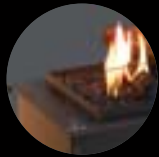


TECHNICAL DATA

Length, mm	650
Burning time, h (min max)	3,0 7,5
Room size, m ² (min* recommended)	27 68

* Using a ventilation system

OPTIONS



Glass Border



Smart Home module



Remote Control



Any matte RAL color finish

EMBEDDINGS





On the photo:
Smart Fireplace Chalet-I (In)
with a hidden Thermobox

in a floor MDF portal, standing by
the wall in the living room.



On the photo:

Decorative elements on the surface of the burner are located directly in the flame, so that the

burner is not visible, and the flame burns directly from real volcanic lava, the glow fiber is heated and

creates the effect of hot coals, and the flame embraces the ceramic logs from all sides.

CHALET-I (EX)

built-in volumetric

FEATURES



Innovative burner with volumetric fire



Mobile App (Wi-Fi, monitoring and control with smooth flame level adjustment)



Built-in automatic refueling (no fuel spill)



Enlarged fuel tank (up to 11 hrs of burning)



Touch-display (full control)



External control and refueling module:
ARS standard / ARS mini (up) /
ARS mini (down)



Decorated with lava stones, ceramic logs and glowing fiber



Black matte finish

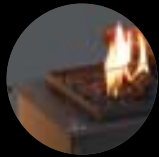


TECHNICAL DATA

Length, mm	650
Burning time, h (min max)	4,4 11,0
Room size, m ² (min* recomended)	27 68

* Using a ventilation system

OPTIONS



Glass Border



Smart Home
module



Remote Control



Any matte RAL color finish

EMBEDDINGS





On the photo:
Smart fireplace Chalet-I (Ex)
with a Hidden Thermobox

in a niche in a square column.
ARS standard module is built into
the side of the column.



On the photo:

Smart fireplace Chalet-I (Ex) in a Hidden Thermobox built into MDF furniture.

ARS standard module is located behind the door next to the fireplace.

CHALET-II (IN)

built-in volumetric

FEATURES



Innovative burner with volumetric fire



Mobile App (Wi-Fi, monitoring and control with smooth flame level adjustment)



Built-in automatic refueling (no fuel spill)



Touch-display (full control)



Integrated push-to-open control and refuelling panel



Decorated with lava stones, ceramic logs and glowing fiber



Black matte finish



TECHNICAL DATA

Length, mm	700	950	1200
Burning time, h (min max)	2,8 6,2	4,2 9,2	4,7 9,2
Room size, m ² (min* recommended)	35 88	35 88	41 102

* Using a ventilation system

OPTIONS



Glass Border (one or two)



Enlarged Fuel Tank



Any matte RAL color finish



Remote Control



Smart Home module

EMBEDDINGS





On the photo:
Smart Fireplace Chalet-II (In) in a
custom See-Through Thermobox.
Installed in a country house

in the wall between the hallway
and the living room.



On the photo:
Smart Fireplace Chalet-II (In) in a
former wood-burning fireplace
stove in a country house.

CHALET-II (EX)

built-in volumetric

FEATURES



Innovative burner with volumetric fire



Enlarged fuel tank (up to 9 hrs of burning)



Decorated with lava stones, ceramic logs and glowing fiber



Mobile App (Wi-Fi, monitoring and control with smooth flame level adjustment)



Touch-display (full control)



Black matte finish



Built-in automatic refueling (no fuel spill)



External control and refueling module:
ARS standard / ARS mini (up) /
ARS mini (down)



TECHNICAL DATA

Length, mm	700	950	1200
Burning time, h (min max)	3,7 9,3	4,6 9,2	4,1 9,2
Room size, m ² (min* recomended)	27 68	32 82	46 116

* Using a ventilation system

OPTIONS



Glass Border (one or two)



Enlarged Fuel Tank



Any matte RAL color finish



Remote Control



Smart Home module

EMBEDDINGS





On the photo:
Smart Fireplace Chalet-II (Ex) with
Reflection Screen on the back wall

is built into a niche at a fireplace
showroom in the Netherlands.



On the photo:
Smart fireplace Chalet-II (Ex) in
the custom Vertical Thermobox

Room Divider.
Standard ARS module built into
the wall next to the fireplace.

AROUND

built-in round

FEATURES



You can choose the character of the fireplace flame



Innovative burner with volumetric fire



Mobile App (Wi-Fi, monitoring and control with smooth flame level adjustment)



No control panel (minimalistic LED indicator)



Remote control (on\off, flame level adjustment)



Does not require refueling (just replace the fuel canister)



Decorated with lava stones, ceramic logs and glowing fiber



TECHNICAL DATA

Diameter, mm	400
Burning time, h (min max)	3,8 8,3
Room size, m ² (min* recommended)	35 88

* Using a ventilation system

OPTIONS



Cylindrical glass



Built-in fuel tank



Any matte RAL color finish



Additional Remote Control



Smart Home module

EMBEDDINGS





On the photo:
Smart Fireplace Around is built into a custom fireplace housing.

The fire in the fireplace is completely covered by glass. The housing has air

intake from below and air outlet near the ceiling.



On the photo:

Smart Fireplace Around is built into dining table. The fireplace has optional fondue

stand and can be used to make fondue and marshmallows.

THERMOBOXES

SINGLE-SIDED

for linear and volumetric fireplaces

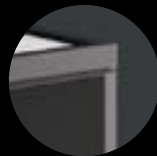
FOR LINEAR

Length of fireplace, mm	700	800	1000	1200	1500	1700	2000	2500
Length of thermobox, mm	800	900	1100	1300	1600	1800	2200	2700
Depth of thermobox, mm (standard inst. / hidden inst.)	340 / 350							
Height of thermobox, mm (standard inst. / hidden inst.)	460 / 400							

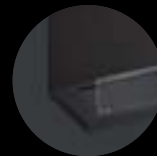
FOR VOLUMETRIC

	700	950	1200	1200
	800	1050	1300	1500
	410 / 420			
	500 / 440			

OPTIONS



Canopy



Long Glass Border



Frame
(only for standard installation)



Reflection Screen

STANDARD
INSTALLATION



Frame for aesthetics,
to cover wall finish



Glass Borders
for additional safety

HIDDEN
INSTALLATION



Canopy to divert hot air
from the furniture

Reflection screen for flame
mirroring effect



Canopy to divert hot air
from the furniture

Glass Borders
for additional safety

LEFT CORNER

for linear and volumetric fireplaces

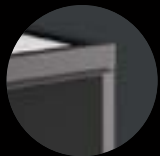
FOR LINEAR

Length of fireplace, mm	700	800	1000	1200	1500	1700	2000	2500
Length of thermobox, mm	800	900	1100	1300	1600	1800	2200	2700
Depth of thermobox, mm (standard inst. / hidden inst.)	340 / 350							
Height of thermobox, mm (standard inst. / hidden inst.)	460 / 400							

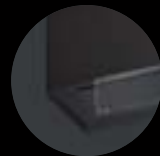
FOR VOLUMETRIC

	700	950	1200	1200
	800	1050	1300	1500
	410 / 420			
	500 / 440			

OPTIONS



Canopy
(one or two)



Long Glass Border



Reflection Screen



Frame
(only for standard installation)



Short Glass Border

STANDARD
INSTALLATION



Frame for aesthetics,
to cover wall finish



Glass Borders
for additional safety

HIDDEN
INSTALLATION



Reflection screen for flame mirroring effect

Canopy to divert hot air from the furniture



Glass Borders for additional safety

RIGHT CORNER

for linear and volumetric fireplaces

FOR LINEAR

Length of fireplace, mm	700	800	1000	1200	1500	1700	2000	2500
Length of thermobox, mm	800	900	1100	1300	1600	1800	2200	2700
Depth of thermobox, mm (standard inst. / hidden inst.)	340 / 350							
Height of thermobox, mm (standard inst. / hidden inst.)	460 / 400							

FOR VOLUMETRIC

	700	950	1200	1200
	800	1050	1300	1500
	410 / 420			
	500 / 440			

OPTIONS



Canopy
(one or two)



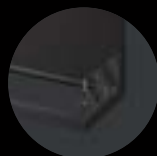
Long Glass Border



Reflection Screen



Frame
(only for standard installation)



Short Glass Border

STANDARD
INSTALLATION



Frame for aesthetics,
to cover wall finish



Glass Borders
for additional safety

HIDDEN
INSTALLATION



Reflection screen for flame mirroring effect

Canopy to divert hot air from the furniture



Glass Borders for additional safety

SEE-THROUGH

for linear and volumetric fireplaces

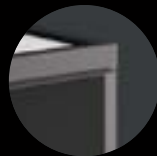
FOR LINEAR

Length of fireplace, mm	700	800	1000	1200	1500	1700	2000	2500
Length of thermobox, mm	800	900	1100	1300	1600	1800	2200	2700
Depth of thermobox, mm (standard inst. / hidden inst.)	340 / 350							
Height of thermobox, mm (standard inst. / hidden inst.)	460 / 400							

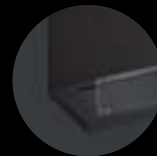
FOR VOLUMETRIC

	700	950	1200	1200
	800	1050	1300	1500
	410 / 420			
	500 / 440			

OPTIONS



Canopy
(one or two)



Long Glass Border
(may be one or two)



Frame (one or two)
(only for standard installation)

STANDARD
INSTALLATION



HIDDEN
INSTALLATION



Canopy to divert hot air from the furniture



Glass Borders for additional safety

THREE-SIDED

for linear and volumetric fireplaces

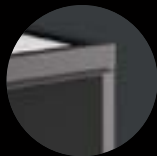
FOR LINEAR

Length of fireplace, mm	700	800	1000	1200	1500	1700	2000	2500
Length of thermobox, mm	800	900	1100	1300	1600	1800	2200	2700
Depth of thermobox, mm (standard inst. / hidden inst.)	340 / 350							
Height of thermobox, mm (standard inst. / hidden inst.)	460 / 400							

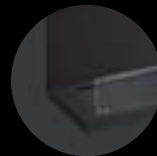
FOR VOLUMETRIC

	700	950	1200	1200
	800	1050	1300	1500
	410 / 420			
	500 / 440			

OPTIONS



Canopy
(one, two)



Long Glass Border



Reflection Screen



Frame
(only for standard installation)



Short Glass Border
(one or two)

STANDARD
INSTALLATION



HIDDEN
INSTALLATION



ROOM DIVIDER

for linear and volumetric fireplaces

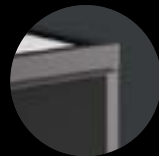
FOR LINEAR

Length of fireplace, mm	700	800	1000	1200	1500	1700	2000	2500
Length of thermobox, mm	800	900	1100	1300	1600	1800	2200	2700
Depth of thermobox, mm (standard inst. / hidden inst.)	340 / 350							
Height of thermobox, mm (standard inst. / hidden inst.)	460 / 400							

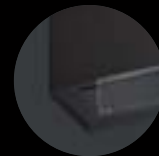
FOR VOLUMETRIC

	700	950	1200	1200
	800	1050	1300	1500
	410 / 420			
	500 / 440			

OPTIONS



Canopy
(one, two or three)



Long Glass Border
(one or two)



Frame
(only for standard installation)



Short Glass Border

STANDARD
INSTALLATION

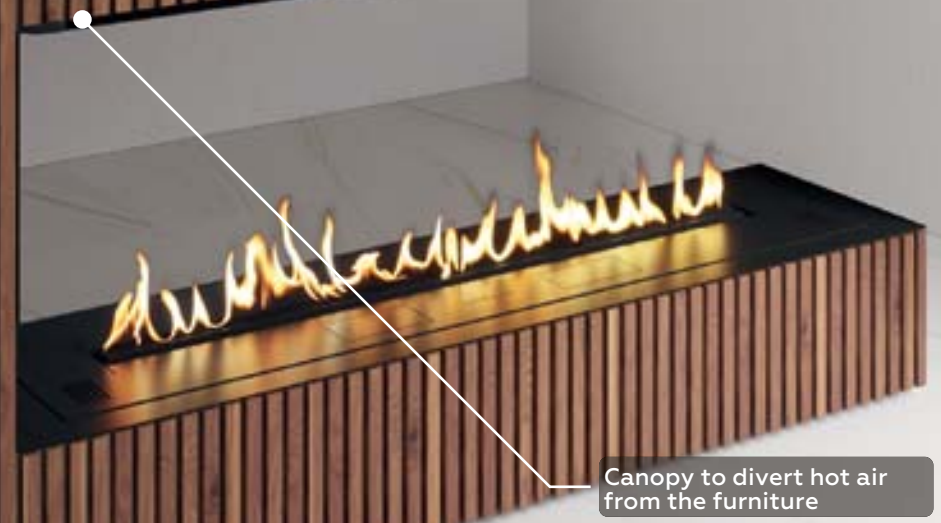


Frame for aesthetics,
to cover wall finish



Glass Borders
for additional safety

HIDDEN
INSTALLATION

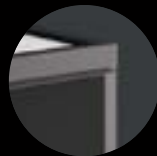


CHALET-BOX

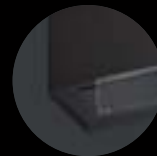
for Chalet-I only

Length of fireplace, mm	650
Length of thermobox, mm (standard inst. / hidden inst.)	750 / 655
Depth of thermobox, mm (standard inst. / hidden inst.)	355 / 350
Height of thermobox, mm (standard inst. / hidden inst.)	750 / 700

OPTIONS



Canopy



Long Glass Border



Frame
(only for standard installation)



Reflection Screen

STANDARD INSTALLATION



Reflection screen for flame mirroring effect

Glass Border for additional safety



Canopy to divert hot air from the furniture

Frame for aesthetics, to cover wall finish

HIDDEN INSTALLATION



OWN A FIRE



MANUFACTURER

NEVERDARK LLC

11 Kopernyka St.,
Kyiv, Ukraine

hello@neverdark.one
neverdark.one